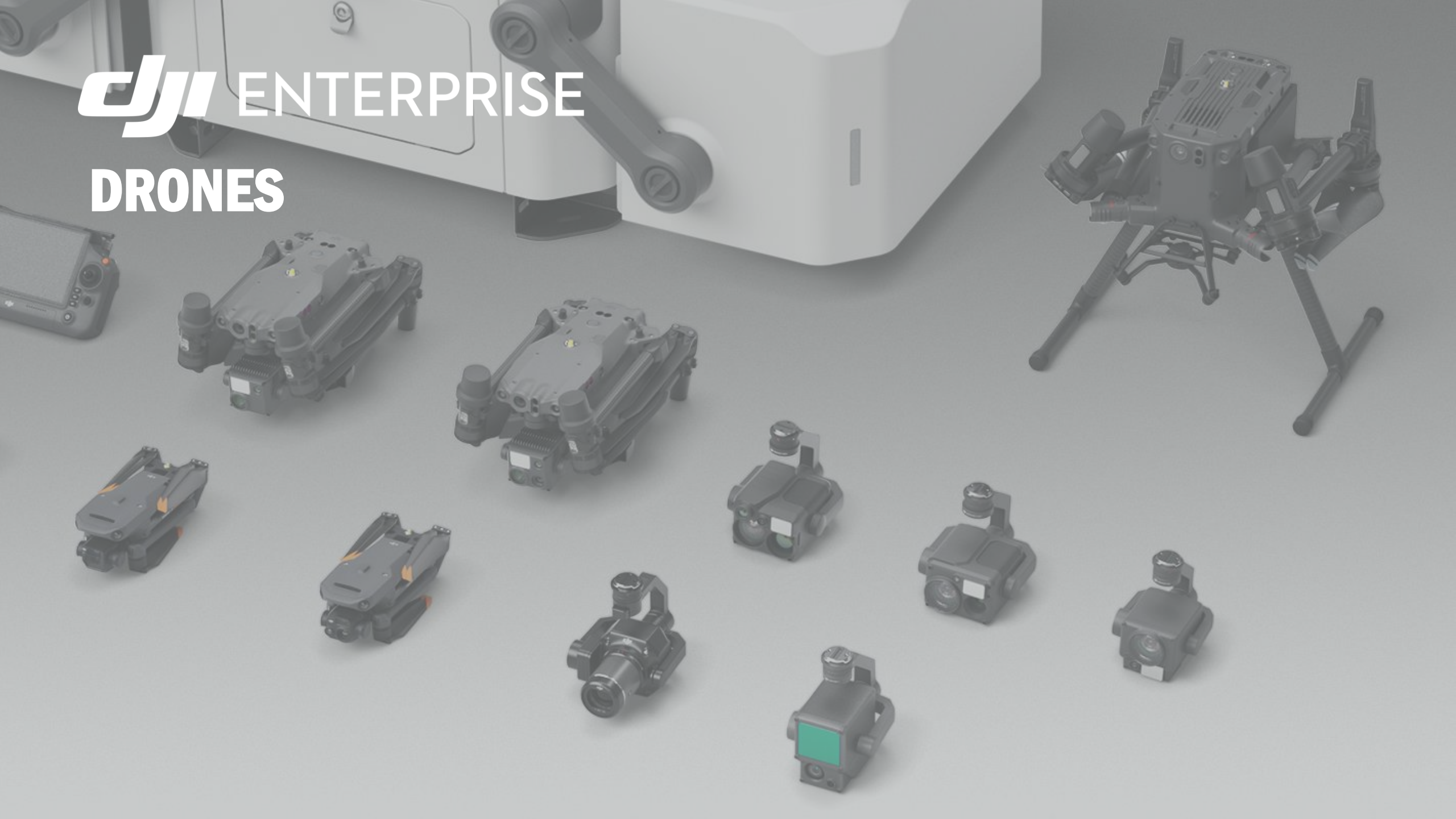


dji ENTERPRISE DRONES



WHY CHOOSE DJI ENTERPRISE?

ENHANCED SAFETY

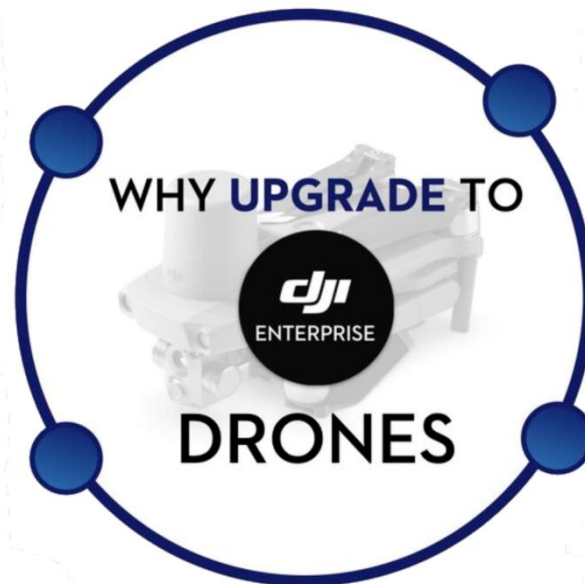
Improved wind resistance, IP rating, working temperature, redundant systems and more

VARIOUS SENSORS/PAYLOADS

- Thermal Imaging
- Night vision
- Multispectral and Lidar Sensing

FEATURES FOR COMMERCIAL WORK

- RTK Capability
- Mission Planning and Smart Inspection
- Pin Point and Smart Track



ENTERPRISE-GRADE SERVICE

- DJI Care Enterprise
- Maintenance Program
- GEO Unlock

SDK SUPPORT

Possibility to integrate with other systems and build customized solutions

- 3rd-party payloads or accessories (PSDK)
- 3rd-party software (MSDK and Cloud API)
- Aircraft control from onboard device (OSDK)



SETTING INDUSTRY STANDARDS FOR DATA SECURITY

DJI has bolstered our systems with robust encryption, data controls, and privacy settings to meet the expectations of our most demanding customers.

- **300,000** hours of work spent on data security
- Independent cybersecurity audit validates **Local Data Mode** by **FTI audit**
- DJI Achieves **Encryption Recognition** from U.S Department of Commerce



Latest M300 Security Features



Capture

- ✓ Fly without logging in to DJI Account
- ✓ Opt-out of all data collection
- ✓ Partial Opt-in to data collection



Transmission

- ✓ 256-bit Encryption
- ✓ Network security modes



Storage

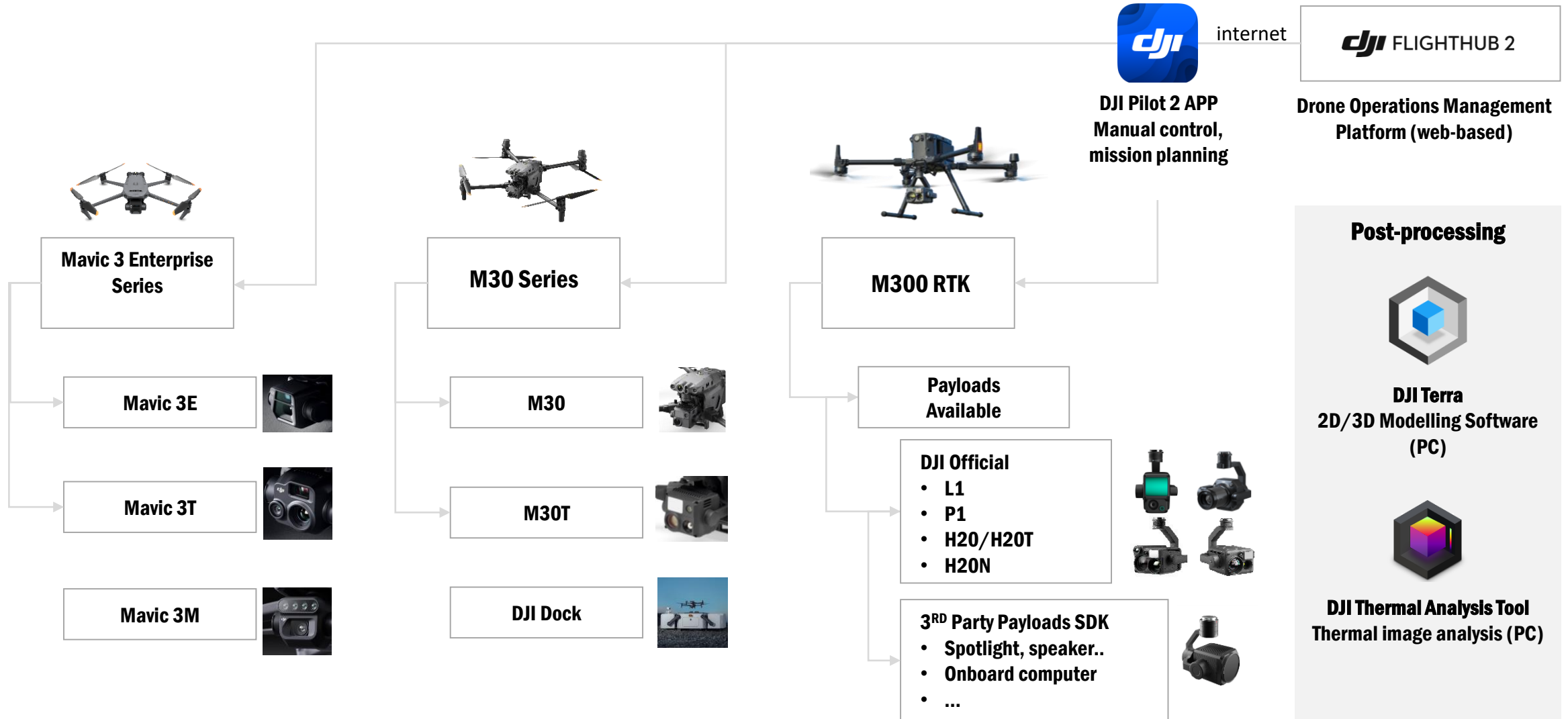
- ✓ US Based AWS Server
- ✓ SD card security code and AES encryption
- ✓ Encrypted Logs



Deletion

- ✓ Delete Flight & Remote Control Logs
- ✓ Restore Factory Settings
- ✓ Delete all company hosted user data on request

DJI ENTERPRISE CURRENT PRODUCT LINEUP



COMPARISON OF DIFFERENT DJI ENTERPRISE DRONES

	Mavic 3E	Mavic 3T	M30T	M300+...
Payload Capability/ capacity	<ul style="list-style-type: none"> - 20 MP Wide+ 7x tele camera - PSDK Support (~ 135g) 	<ul style="list-style-type: none"> - Tele/Wide/640 Thermal - PSDK Support (~ 135g) 	<ul style="list-style-type: none"> - 5~ 16x optical zoom - Night Scene - PSDK Support (~ 230g) 	<ul style="list-style-type: none"> - 2.7 kg payload capacity - Support H20T, H20N, P1, L1, PSDK payloads (drop kit, spotlight, speaker, etc.)
Hardware Performance	<ul style="list-style-type: none"> - 45min flight time - Omnidirectional Sensing 		<ul style="list-style-type: none"> - 15m/s wind resistance - IP ratings - Built-in FPV camera - RC Plus compatibility (currently for M30 only, M300 support is planned in the future) - Dedicated battery station for faster charging 	
Software Features	<ul style="list-style-type: none"> - DJI Pilot 2 / FlightHub 2 / Android MSDK V5 Support - AES 256 Encryption - Local Data Mode - Laser range finder (only on M30 series and H20 series) - Dual RC (only on M30 series and M300) 			

MAVIC 3 ENTERPRISE SERIES

EVERYDAY COMMERCIAL DRONE

- **Portable Design, <1kg in weight**
- **45min maximum Flight Time**
- **Surveying / thermal camera systems**
- **DJI Pilot 2 and FlightHub 2 compatibility**
- **PSDK, MSDK, and Cloud API Support**
- **Enterprise accessories**



RTK Module



Loud Speaker



RC Pro Enterprise



D-RTK 2 station



MAVIC 3 ENTERPRISE SERIES

EVERYDAY COMMERCIAL DRONE

M3E

- Entry-level commercial drone that can fulfill basic needs
- Survey grade accuracy with RTK module
- Real-time terrain following and smart oblique

Wide: 4/3 inch CMOS, 20MP, 3.3um Pixel Size, Mechanical Shutter, 24mm Equivalent Focal Length

0.7-second interval shooting

Tele: 1/2 inch CMOS, 12MP, 56x Hybrid Zoom, 162mm Equivalent Focal Length



M3T

Entry-level thermal drone for public safety and thermal inspections

Wide: 1/2 inch CMOS, 48Mp, 24mm Equivalent Focal Length

Tele: 1/2 inch CMOS, 12MP, 56x Hybrid Zoom, 162mm Equivalent Focal Length

Thermal: 640 * 512@30Hz, DFOV 61°, 40mm Equivalent Focal Length, radiometric



MAVIC 3 MULTISPECTRAL

The surveying system of Mavic 3 Enterprise integrated with multispectral sensors

High Precision Surveying

- 4/3 CMOS
- 1/2000s mechanical shutter
- 0.7s minimum shooting interval
- Centimeter level positioning accuracy

Rich applications

- **Crop growth monitoring**
- **Generate prescription maps for agras drones**
- **Environmental monitoring**
- **Natural resource surveys**



4 × 5 MP Multispectral Camera

20 MP 4/3 CMOS RGB Camera
(Mechanical Shutter)

MATRICE 30 SERIES

POWER IN PORTABILITY

LASER RANGEFINDER (LRF)

1200m | ~0.75 mile detection range •

Accuracy: $\pm (0.2m + D * 0.15\%)$ •

(D is the distance to a vertical surface)

WIDE CAMERA

- 1/2" CMOS 12 MP
- Equivalent focal length: 24mm
- 4k30fps video

ZOOM CAMERA

1/2" CMOS 48 MP •

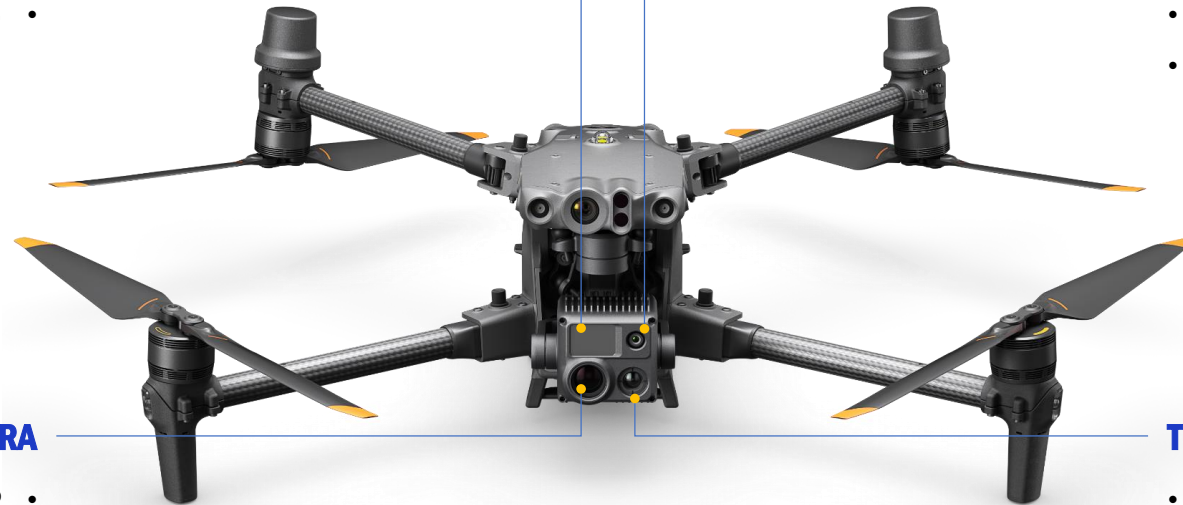
5x-16x Optical Zoom •

200x Digital Zoom •

8k images and 4k30fps video •

THERMAL CAMERA (ONLY M30T)

- 640x512@30Hz
- Equivalent focal length: 40mm
- R-JPG Images



M30T

MATRICE 30 SERIES

POWER IN PORTABILITY

Weather Resistance

- IP55 rating for the aircraft
- IP54 rating for RC Plus
- -20°C to 50°C
- 15m/s wind resistance

Powerful Hybrid Payload

- Significantly improved zoom capability
- Laser range finder (enabling smart features)
- Built-in FPV camera

DJI RC Plus Compatibility

- 7 inch high-brightness screen
- Ergonomic design with physical buttons
- 4 antennas for enhanced transmission
- Swappable battery
- Dual remote controller option

Quick Deployment

- 41min flight time
- Hot-swappable dual batteries
- 3.77kg in weight
- Fit in a backpack

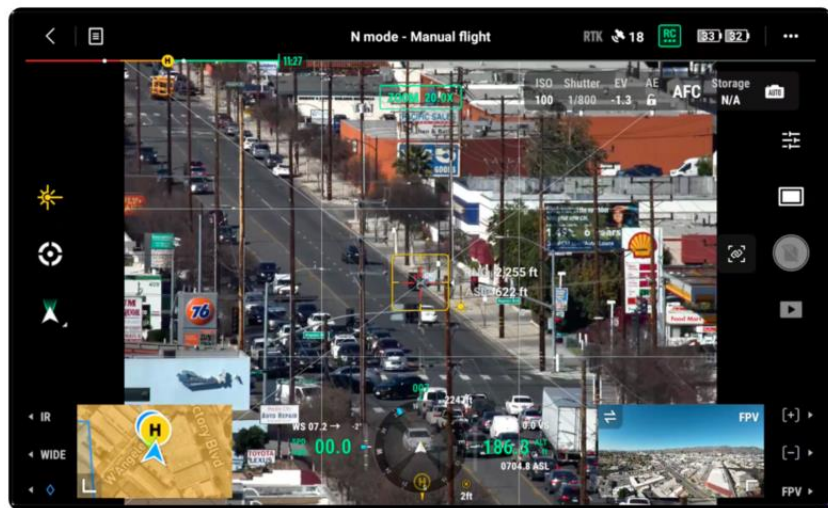


M30 SERIES

SUPERIOR ZOOMING CAPABILITY



2x



20x



200x

dji ENTERPRISE
M300 and PAYLOADS



MATRICE 300 RTK

DJI'S VERSATILE DRONE PLATFORM

Superior Performance

- 55-min Max Flight Time
- 15km Max Transmission
- 6 Directional Sensing & Positioning
- IP45 Rating
- -20°C to 50°C Operating Temperature
- Hot-swappable Battery

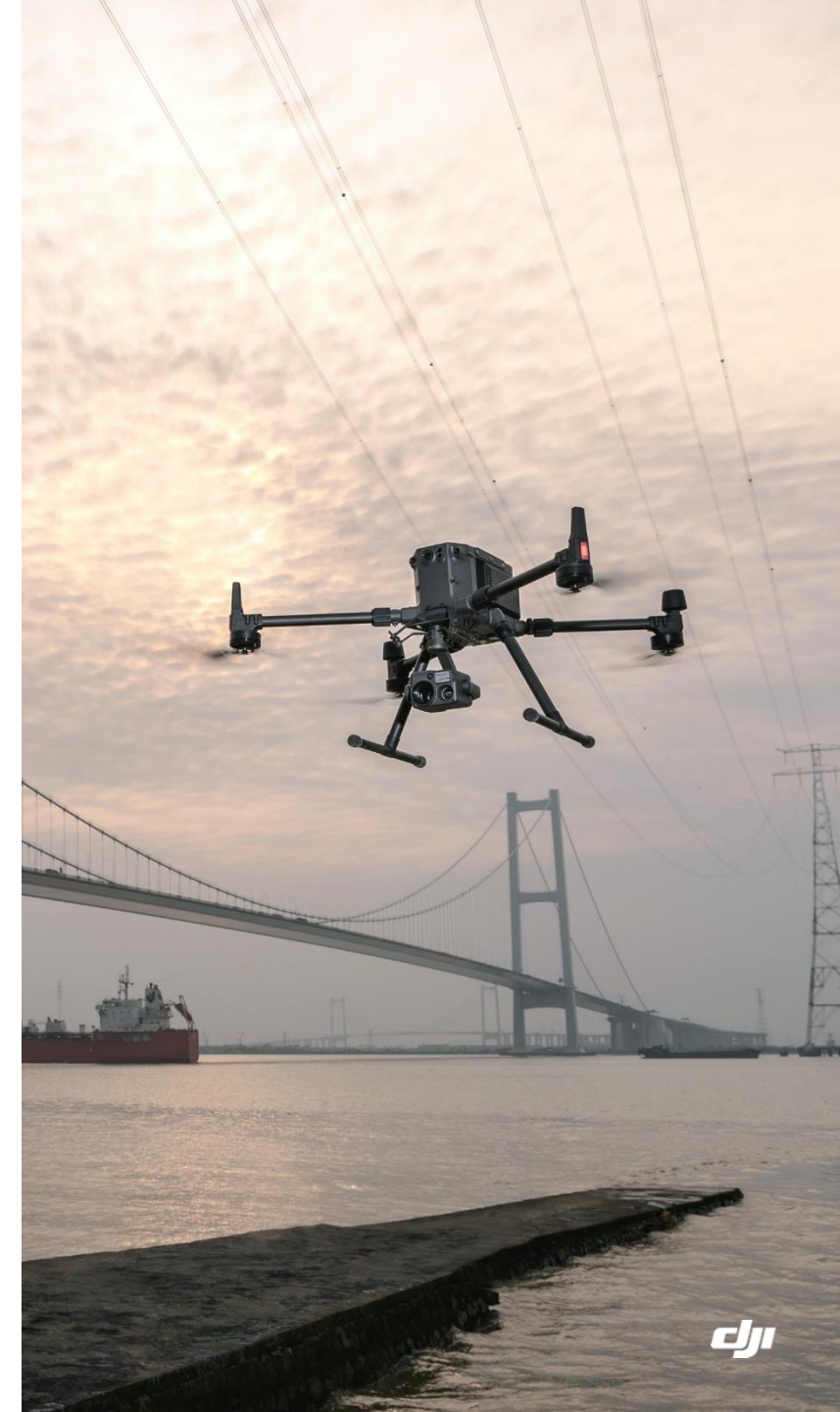


Advanced Intelligence

- Smart Inspection (Live Mission Recording + AI Spot Check)
- Smart Pin and Track (Pin Point + Smart Track)
- Aviation-Grade Situational Awareness

Payload Capability

- Up to 3 payloads simultaneously
- 2.7 kg payload capacity
- Compatible with DJI H20 Series, P1, L1, etc
- MSDK/ PSDK/ OSDK/ Cloud API
- Compatible with D-RTK 2, CSM radar, etc.



COMPATIBLE PAYLOADS FOR M300 RTK

DJI Payloads



Zenmuse H20 Series
DJI's first hybrid-sensor
Solution
(H20 and H20T)



Zenmuse H20N
Night-vision hybrid camera



Zenmuse P1
45MP Full-frame Camera



Zenmuse L1
LiDAR + RGB Solution

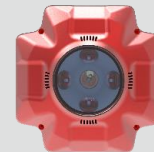
3rd-Party Payloads



Spotlight



Laser Methane Telemeter



Oblique Camera



Speaker



Gas Detector



And more...

ZENMUSE H20 & H20T

DJI'S FIRST HYBRID PAYLOAD

Zoom Camera

- 20 MP
- 23x Hybrid Optical Zoom
- Equivalent focal length: 31.7-556.2mm

Laser Rangefinder (LRF)

- Wavelength: 905nm
- 1200m detection range
- $\pm (0.2 + D * 0.15\%)$ m

Radiometric Thermal Camera

(H20T only)

- 640x512
- Frame Rate: 30fps
- 58mm equivalent focal length

Wide Camera

- 12 MP
- Equivalent focal length: 24mm

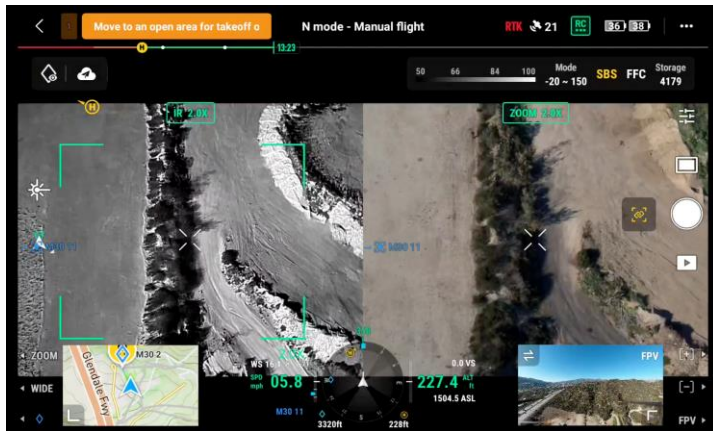


ZENMUSE H20 & H20T

SMART FEATURES

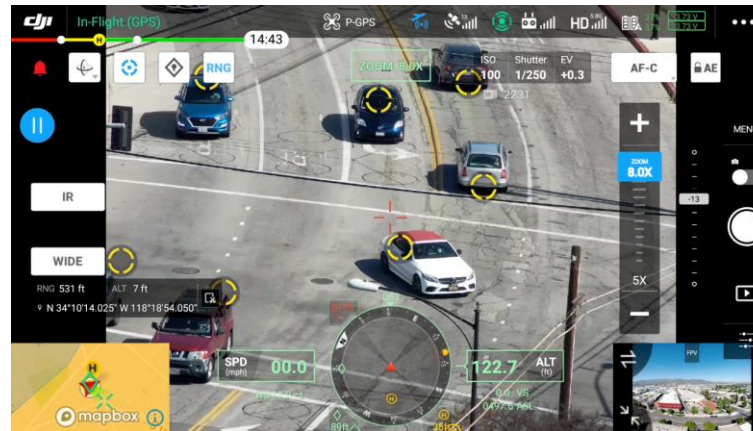
Pin Point

Mark an object of interest with the laser rangefinder and view its location on the map



Smart Track

The gimbal can automatically detect and follow a defined object such as vehicles, people, and boats



AI Spot-check

Improve the accuracy of automated missions with machine learning



Note: These smart features are also supported by the M30 Series

ZENMUSE H20N

NIGHT VISION CAMERA

Thermal Wide Camera

- 640x512@30Hz
- Equivalent focal length: 53mm
- Equal to 2x optical zoom

Thermal Tele Camera

- 640x512@30Hz
- Equivalent focal length: 196mm
- Equal to 8x optical zoom
- 32× max zoom



Laser Range Finder

- 1200m detection range
- $\pm (0.2m + D * 0.15\%)$

Starlight Wide Camera

- 1/2.7' CMOS
- Starlight sensor
- Equivalent focal length: 29mm

Starlight Zoom Camera

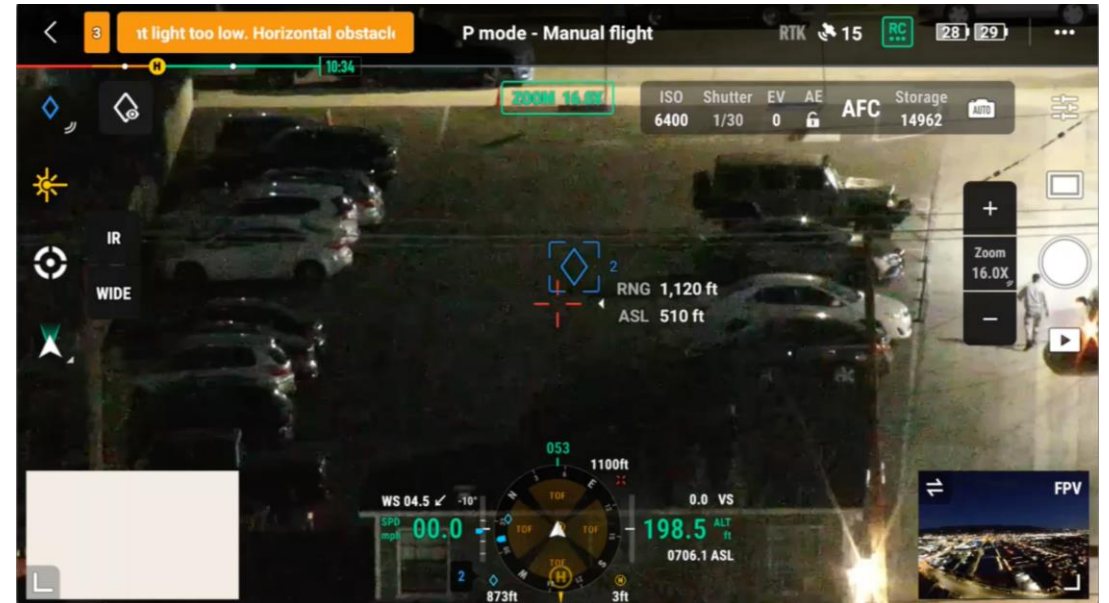
- 1/1.8' CMOS
- Starlight sensor
- 2x - 20x hybrid optical zoom
- 128x max zoom

ZENMUSE H20N

STARLIGHT RGB CAMERAS



H20T Non-Starlight Camera

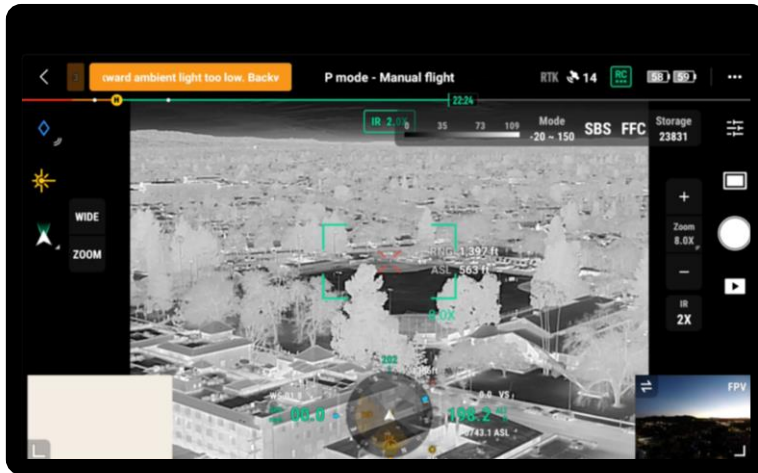


H20N Starlight Camera

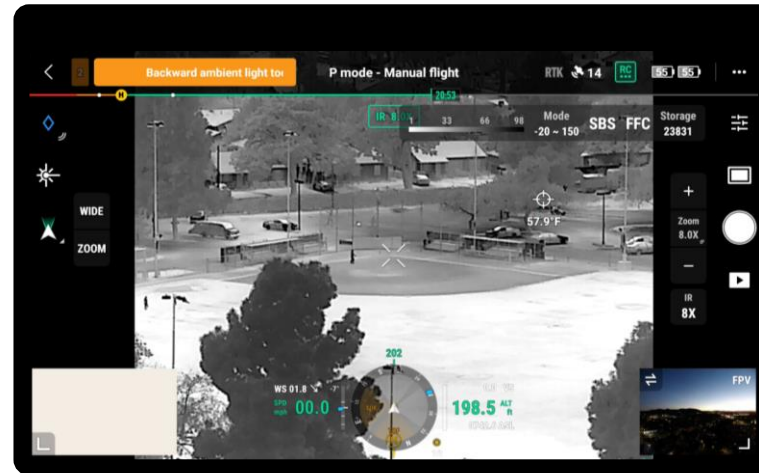
ZENMUSE H20N

DUAL THERMAL CAMERAS

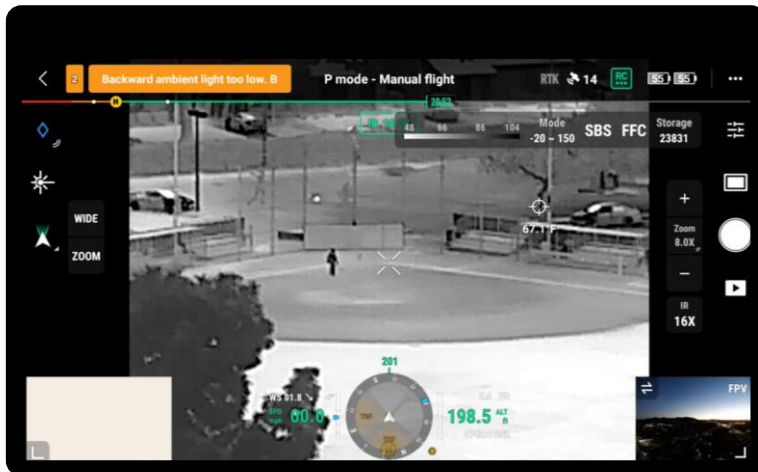
2X



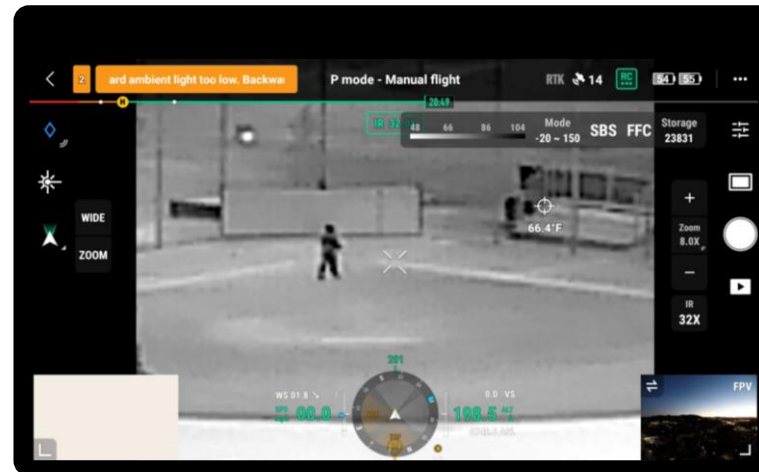
8X



16X



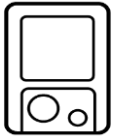
32X



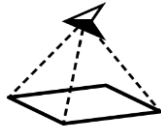
425m / ~1400 feet away

ZENMUSE L1

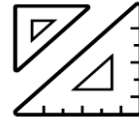
LIDAR & RGB FUSION



**Integrates a LiDAR module,
an RGB camera and a high
accuracy IMU**



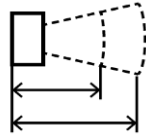
**High Efficiency
2km² covered in a single flight**



**Vertical Accuracy: 5cm /
Horizontal Accuracy: 10cm**



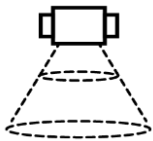
Supports 3 Returns



**Detection Range 450m
(80% reflectivity, 0 klx)**



**IP54 Ingress Protection
Level**



Point Rate: 240,000 pts/s

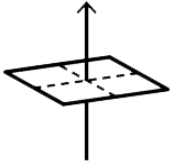


Point Cloud LiveView

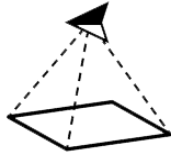


ZENMUSE P1

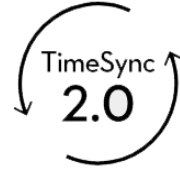
FULL-FRAME SURVEYING CAMERA



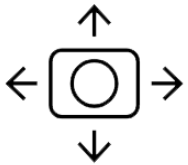
Accuracy without GCPs
3cm horizontally /
5cm vertically



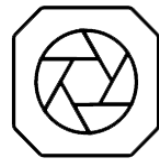
High Efficiency
3km² covered in a single flight



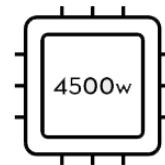
TimeSync 2.0 -
synchronization at the
microsecond level



3-axis Stabilized Gimbal
Smart Oblique Capture



Global Mechanical Shutter
SS 1/2000 Sec.



45 MP Full-frame Sensor

2D Orthomosaic | 3D Oblique | Detailed Modelling



dji ENTERPRISE

DJI DOCK



DJI DOCK

REMOTE, AUTOMATED DRONE DEPLOYMENT SOLUTION

Traditional Method

Current drone operations need to two challenges, especially when scaling the operations

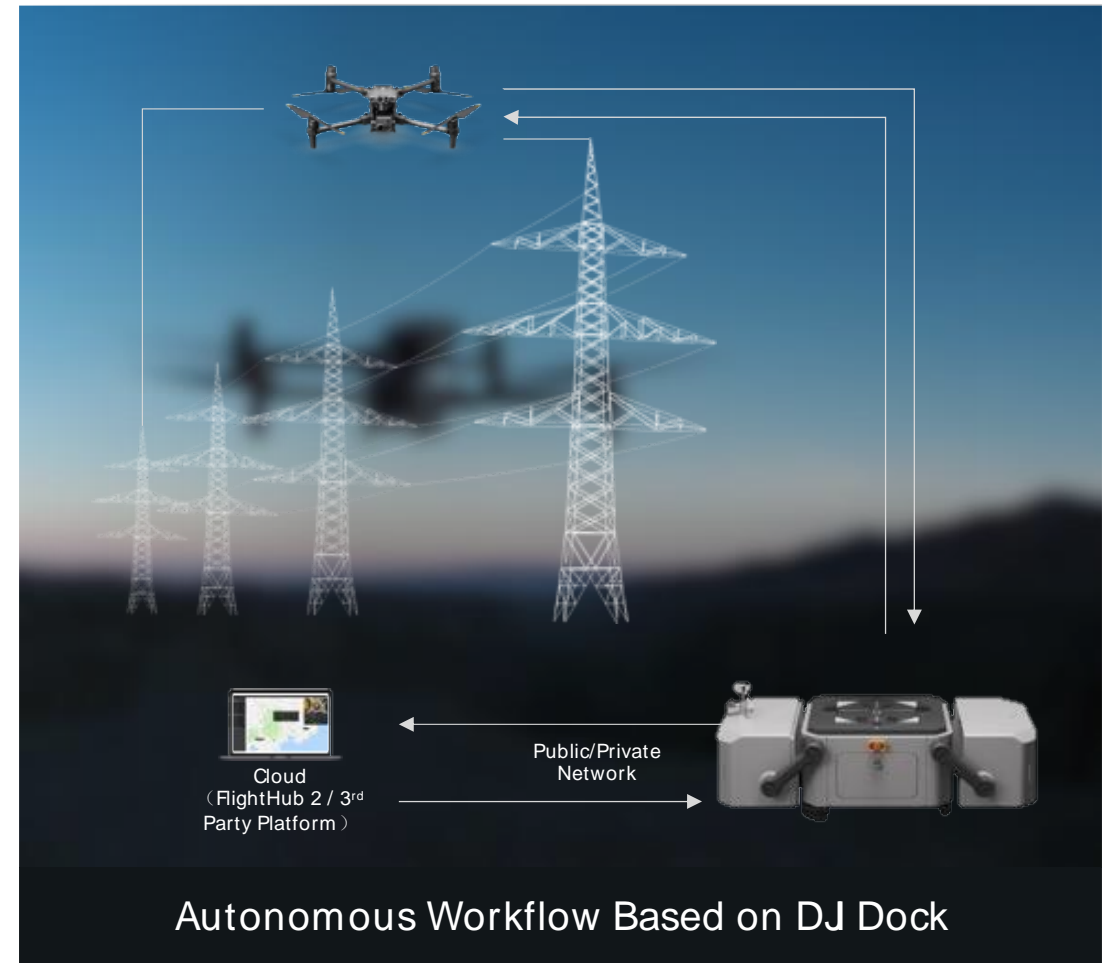
- 1 Labor cost of pilot teams
- 2 High operation skills required

A New Take On Remote Work

To overcome these drone challenges, DJI has come up with DJI DOCK, enabling a new way of remote and automated deployment in conjunction with FlightHub 2

- › Remote operations without pilots site
- › Automated operations

The takeoff and landing, charging process can be realized with DJI Dock



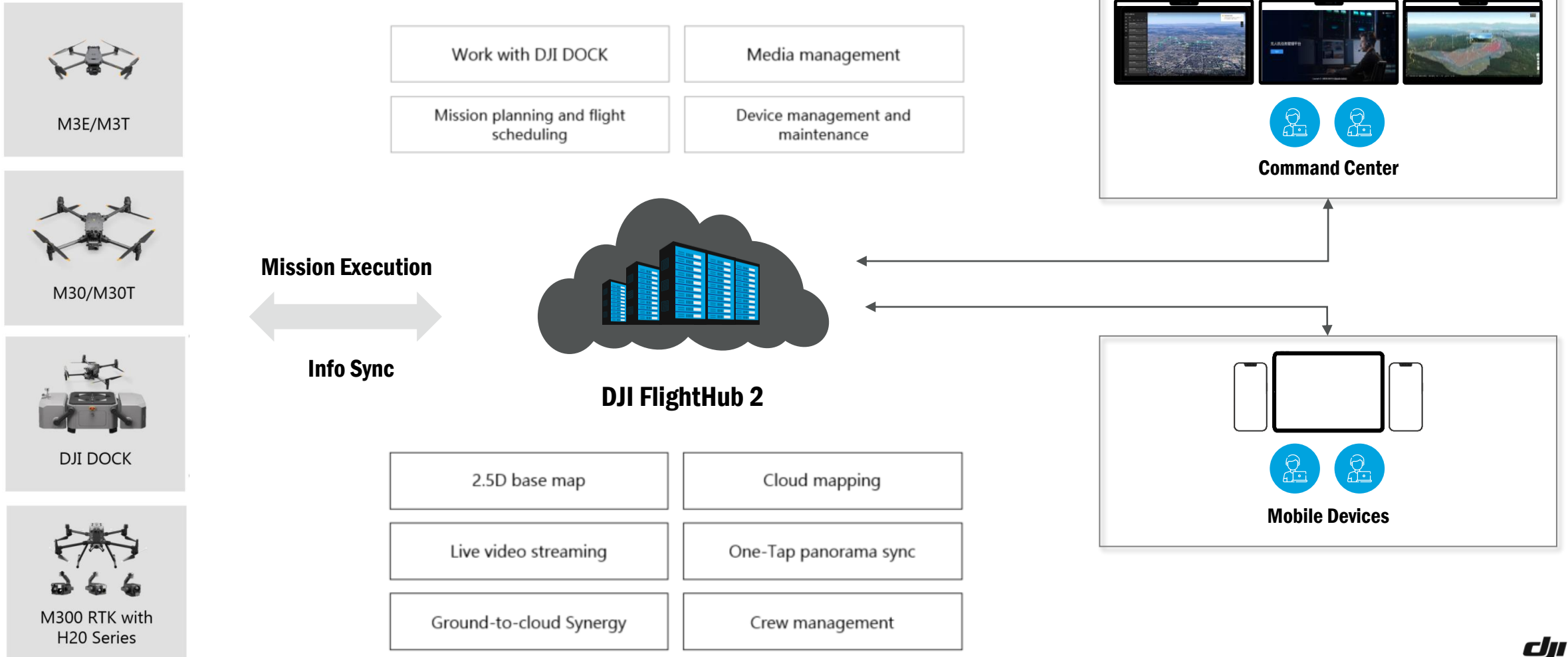
Autonomous Workflow Based on DJ Dock

dji ENTERPRISE SOFTWARE



DJI FLIGHTHUB 2

OPERATIONS MANAGEMENT PLATFORM



DJI TERRA

DJI'S MAPPING SOFTWARE

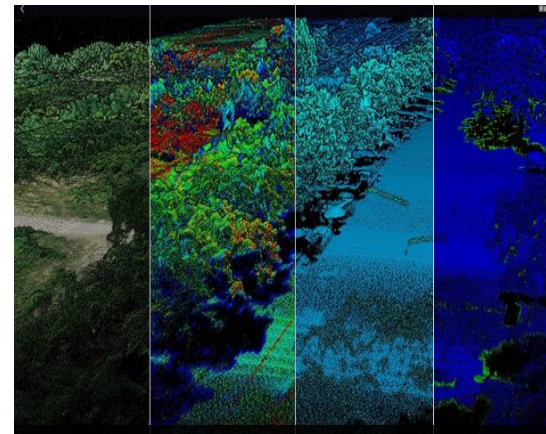
DJI Terra is a Windows-based, easy to use mapping software that can help industry professionals transform real-world scenarios into digital assets. With drone images/lidar data imported, it can create various types of deliverables to satisfy multiple business needs.



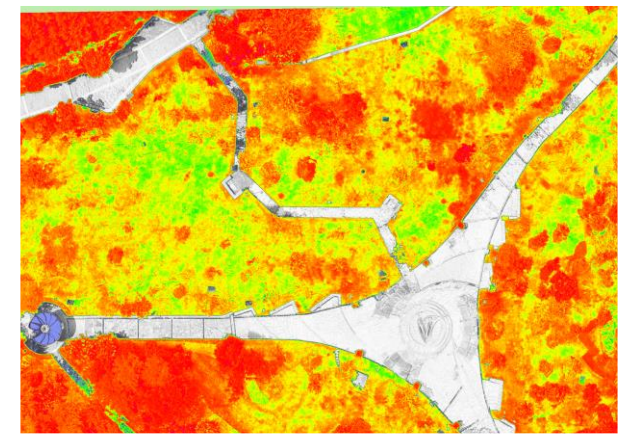
2D Map



3D Model



Lidar Point Cloud



Multispectral Map



dji ENTERPRISE

AFTER-SALES SERVICE AND TRAINING

DJI CARE ENTERPRISE

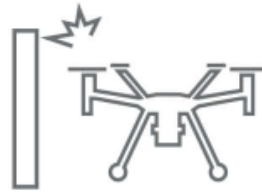
DJI Care Enterprise was specially created to provide comprehensive protection for your DJI Enterprise products.



User Error



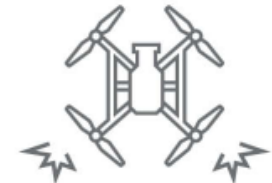
Signal Interference



Collision



Water Damage



Drop Damage

Basic Plan (1-Year)

- Up to 2 affordable replacements
- DJI Care Express for fast replacements
- 1 Standard Maintenance for free

Basic Plan (2-Year)

- Up to 3 affordable replacements
- DJI Care Express for fast replacements
- 1 Standard Maintenance for free
- Extended warranty to 2 years

Plus Plan (1-Year)

- Unlimited free repair within coverage limit
- Coverage Sharing
- 1 Standard Maintenance for free

* Some of DJI Care Enterprise benefits are only applicable to selected products.

ENTERPRISE MAINTENANCE PROGRAM

Raise Efficiency | Ensure Safety | Improve Recordkeeping

Aircraft Maintenance Program

Designed for DJI Enterprise Aircraft

Basic Service

Through detailed inspection, deep cleaning, firmware updates and calibration, the impact of...

- ✓ Deep Clean
- ✓ Parts Inspection
- ✓ Update & Calibration

Standard Service

Apart from the detailed inspection, deep cleaning, firmware updates and calibration, the...

- ✓ Deep Clean
- ✓ Parts Inspection
- ✓ Update & Calibration
- ✓ Easily Worn Parts Replacement

Premium Service

In addition to the Standard Service, the Premium Service includes the core components...

- ✓ Deep Clean
- ✓ Parts Inspection
- ✓ Update & Calibration
- ✓ Easily Worn Parts Replacement
- ✓ Core Components Replacement

DJI ACADEMY – DJI’S TRAINING CENTER



Training

Latest UAS technology
Industry-specific applications
Comprehensive solutions



Certification

Manufacturer endorsements
Industry orientations
Global standards



Global Platform

650+ Global training centers
5000+ Professional instructors
6,000,000m² Flight training space



Integrated Ecosystem

Extensive knowledge base
Growing UAS community
Job and employment services

دجی